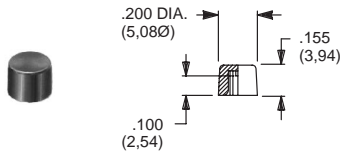


CAPS

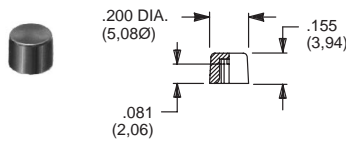
EP & TP SERIES, .100" DIA. PLUNGERS



PART NO.

508101000 WHITE
508102000 BLACK
508103000 RED

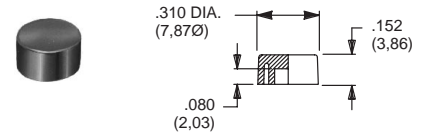
TP SERIES, .100" DIA. PLUNGERS (Recommended for S9 plunger)



PART NO.

538701000 WHITE
538702000 BLACK
538703000 RED

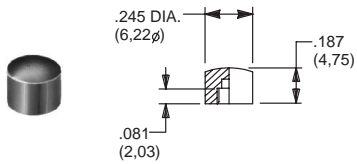
EP & TP SERIES, .100" DIA. PLUNGERS



PART NO.

465801000 WHITE
465802000 BLACK
465803000 RED

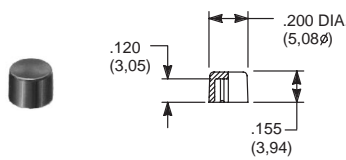
8600 & KM33 SERIES, .106" DIA. PLUNGERS



PART NO.

785101000 WHITE
785102000 BLACK
785103000 RED

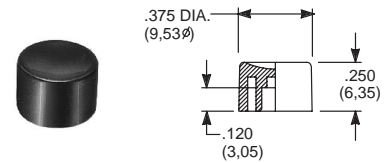
8020, 8060, E010, E020, KM11, L & TP SERIES, .122" DIA. PLUNGERS



PART NO.

708901000 WHITE
708902000 BLACK
708903000 RED

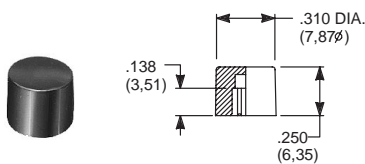
8020, 8060, E010, E020, KM11 & L SERIES, .122" DIA. PLUNGERS



PART NO.

752701000 WHITE
752702000 BLACK
752703000 RED

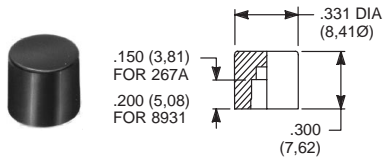
8020, 8060, E010, E020, KM11, L & TP SERIES .122" DIA. PLUNGERS



PART NO.

801801000 WHITE
801802000 BLACK
801803000 RED

.157" DIA. PLUNGERS



PART NO.

267A01000 WHITE
267A02000 BLACK
267A03000 RED

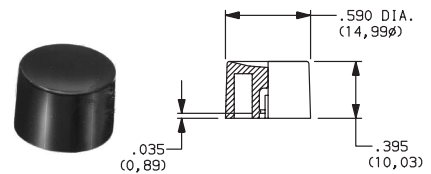
FOR SERIES
 85X2T, 8534T
 Models only

PART NO.

893101000 WHITE
893102000 BLACK
893103000 RED

FOR SERIES
 85X1T, 8532T1,
 8533T, 8534T1 Models only

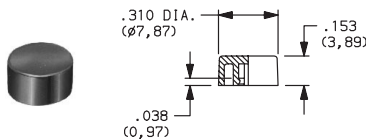
8020, 8050, E010, E020 & L SERIES, .122" DIA. SNAP-FITTING PLUNGERS



PART NO.

894001000 WHITE
894002000 BLACK
894003000 RED

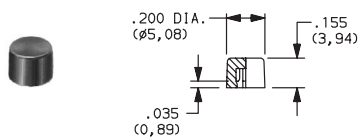
EP11 & EP12 MODELS, .100 DIA. SNAP-FITTING PLUNGERS



PART NO.

585A01000 WHITE
585A02000 BLACK
585A03000 RED

EP11 & EP12 MODELS, .100 DIA. SNAP-FITTING PLUNGERS

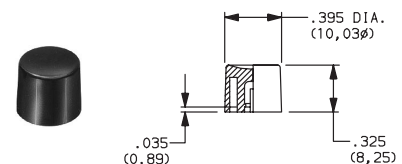


PART NO.

785A01000 WHITE
785A02000 BLACK
785A03000 RED

New!

8020, 8050, E010, E020 & L SERIES, .122" DIA. SNAP-FITTING PLUNGERS



PART NO.

894101000 WHITE
894102000 BLACK
894103000 RED

MATERIAL

Nylon. Finish: Gloss.

Special colors, custom markings available, consult Customer Service Center.



CODED SWITCHES – SPACERS

3P SERIES, .100" THK.
(Makes section pitch .400")



PART NO.
663602000 BLACK
663609000 GRAY

3 SERIES FRONT MOUNT - FITS TYPE 0 & 3,
.185" THK. (Makes section pitch .500")



PART NO.
410602000 BLACK
410609000 GRAY

3 SERIES FRONT MOUNT, FITS TYPE 0 & 3,
.078" THK. (Makes section pitch 10mm)



PART NO.
410802000 BLACK
410809000 GRAY

3 SERIES REAR MOUNT, FITS TYPE 1,
.150" THK. (Makes section pitch .500")



PART NO.
410702000 BLACK
410709000 GRAY

3 SERIES REAR MOUNT, FITS TYPE 2,
.150" THK. (Makes section pitch .500")



PART NO.
473602000 BLACK
473609000 GRAY

HARDWARE FOR FIELD ASSEMBLY - 3 SERIES ONLY.

SCREWS FOR FIELD ASSEMBLY OF THUMBWHEEL SWITCHES
(2 screws needed per assembly + 403500000 nuts)

SCREW PART NUMBER (0-80 UNF THD. SIZE)	NUMBER OF SECTIONS IN ASSEMBLY				
	FRONT MOUNTING			REAR MOUNTING	
	MTG. STYLE - 00, 30	MTG. STYLE - 03, 33	MTG. STYLE - 04, 34	MTG. STYLE - 10, 20	MTG. STYLE - 14, 24
412700000	1 - 2	1	1	1 - 2	1
412701000	3 - 4	2 - 3	2	3	2
412702000	5 - 7	4 - 5	3 - 4	4 - 6	3 - 4
412703000	8 - 10	6 - 8	5 - 6	7 - 9	5 - 6
412704000	11 - 13	9 - 10	7 - 8	10 - 12	7 - 8
412705000	14 - 16	11 - 13	9 - 10	13 - 15	9 - 10

See 3 series mounting styles, pages J-11 thru J-14.

NUT



PART NO. Two nuts required per assembly and screws.
403500000

NUT DRIVER (For 403500000 nut)



PART NO. Not required for assembly.
Not supplied with sample pieces.
406100652

FIXING SPANNERS

RAFI 15.2mm, Lumotast 75 & 8.1mm



PART NO.

5.58002.0190000

DESCRIPTION

Tool used to secure switch to panel.
Tightens threaded fixing ring.

RAFIX 16



PART NO.

5.58002.0340000

DESCRIPTION

Tool used to secure switch to panel.
Tightens hexagon nut.

FRAMES

7000 & E SERIES
J11, J21 ACTUATORS



Material: Spring Steel.

PART NO.

764500223 BRIGHT CHROME
764500252 SATIN CHROME
764500746 BLACK ENAMEL
764500747 WHITE ENAMEL
764601106 RETAINING SPRING

7000 & E SERIES
J16, J26 ACTUATORS



Material: Nylon.
Finish: Matte.

PART NO.

459101000 WHITE
459102000 BLACK
459103000 RED

7000, 8020, 8060 & 8500 SERIES
J51, J61, J81, J83, J85, J86, J91 ACTUATORS



Material: Nylon.
Finish: Matte.

PART NO.

615601000 WHITE
615602263 BLACK
615603000 RED

J19 ACTUATOR



Material: Spring Steel.

PART NO.

781000223 BRIGHT CHROME
781000252 SATIN CHROME
781000746 BLACK ENAMEL
781000747 WHITE ENAMEL

7000 & 9000 SERIES
J37, J47, J57 ACTUATORS



Material: Spring Steel.

PART NO.

445400223 BRIGHT CHROME
445400252 SATIN CHROME
445400746 BLACK ENAMEL
445400747 WHITE ENAMEL

7000, 8020, 8060 & 8500 SERIES
J52, J62, J82, J84, J92 ACTUATORS

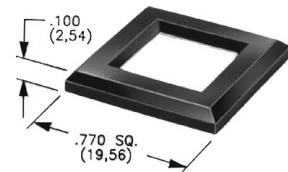


Material: Nylon.
Finish: Matte.

PART NO.

613301000 WHITE
613302263 BLACK
613303000 RED

J50, J60, J80, J83, J90 ACTUATORS



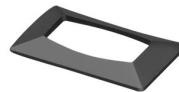
Material: Nylon.
Finish: Matte or Gloss.

MATTE GLOSS

PART NO. PART NO.

486701000 **486801000** WHITE
486702000 **486802000** BLACK
486703000 **486803000** RED

7000 SERIES
J76 ACTUATORS



Material: Nylon.
Finish: Matte.

PART NO.

724A01000 WHITE
724A02000 BLACK
724A03000 RED

Special colors, custom markings available, consult Customer Service Center.



Hardware

MISCELLANEOUS

STOP PINS



PART NO.

- 402900000** 3 SERIES
- 657800000** 3P SERIES
- 537100000** M SERIES
- 587300000** SF/SR & S2 SERIES

3 SERIES CONNECTOR



PART NO.

- 605A00000** PC Fits 0, 1, 4, 5 terminations only.
- 605A02000** SOLDER LUG

3P SERIES CONNECTOR



PART NO.

- 630000000** Fits 0, 1 terminations only.

M SERIES WASHERS



PART NO.

- 586800000** RUBBER PANEL SEAL
- 537202000** ADHESIVE MYLAR
- RETAINS STOP PINS

Z3 TERMINATION FEMALE CONNECTOR



PART NO.

- 530100000**

KS SERIES LED SUPPORT



PART NO.

- 540300000**

Miscellaneous Components, Hardware & Technical Data

